



BLE Smart Keypad

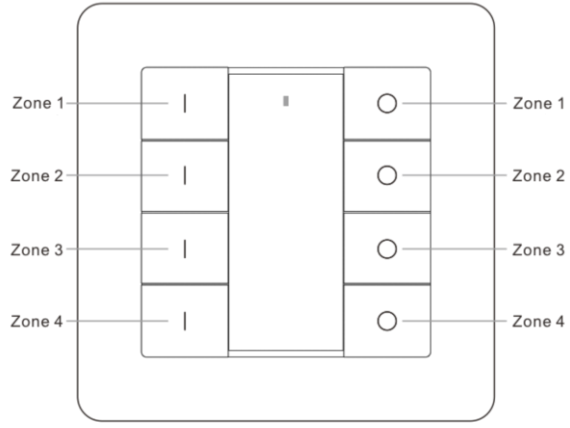
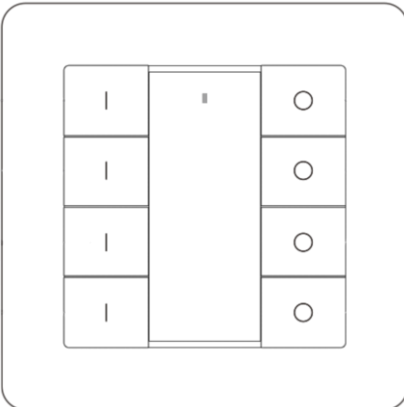


- Wireless smart control by L&E Application “Zense+”
- Bluetooth mesh Protocol, Low power consumption
- Maximum 10m operating range between each nodes
- Configurable Switch Button
 - On-Off
 - Dim up
 - Dim down
 - Grouping

Specification

Model	ZCG2-8K-BT-SR-SW-SC-4Z-BATT-ID-IA
Input Power	3V(1xCR2450 Battery)
Dimmable Range	1-100%
IP Rating	-
Cover	Milky/Polycarbonate
Ambient Temperature	0 ~ 40°C
Relative Humidity	8 ~ 80 %
Dimension	80x80x13.6mm

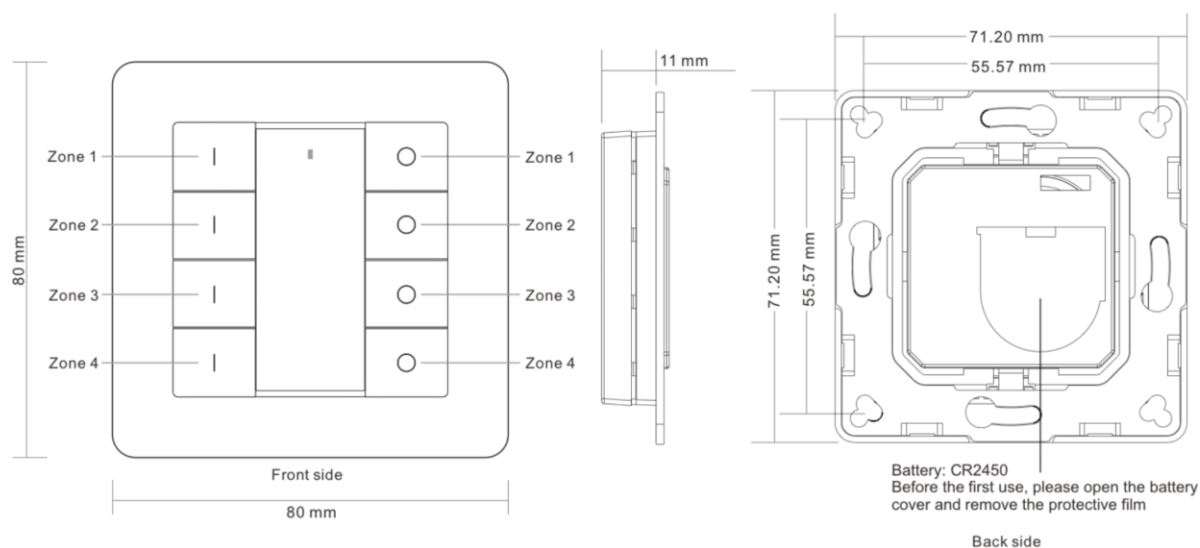
Button Index



Front side

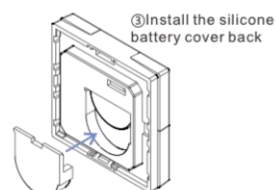
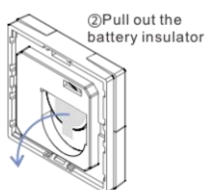
BLE Smart Keypad

Dimensions

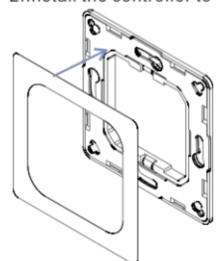


Installation

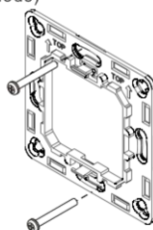
1. Remove battery insulator



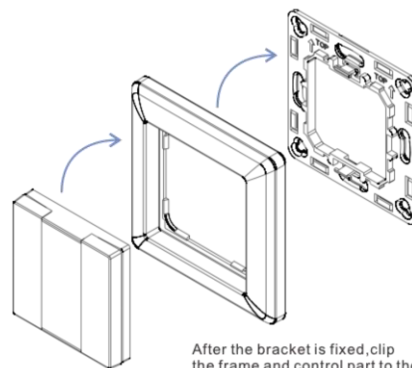
2. Install the controller to wall (2 methods)



Method 1: Stick 3M glue on the back of the bracket and then stick the bracket to the wall

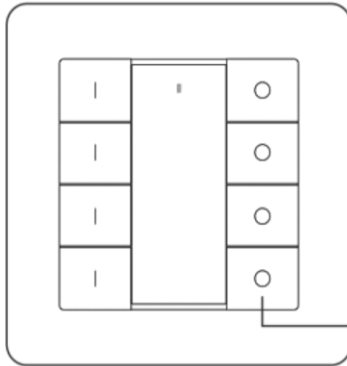


Method 2: Screw the bracket to the wall



BLE Smart Keypad

Pairing



Step 1: Do wiring the 2.4G mesh receiver according to wiring diagram (please refer to the instruction of 2.4G mesh receiver that you would like to pair with).



Step 2: Click the “Prog. Key” or “Reset” button on 2.4G mesh receiver (or reset power of the receiver 3 times continuously if the button is not accessible) to set it into pairing to RF remote status

Step 3: Click on button | or off button ○ of any zone you would like to pair the receiver to, of the remote (e.g. off button ○ of zone 4), LED lights connected with the receiver flicker once means the receiver is paired to zone 4 of the remote successfully.

Note: one receiver can be paired with max 8 remote controls.

Safety & Warnings

- This device contains a button lithium battery that shall be stored and disposed properly.
- DO NOT expose the device to moisture
- Do not ingest battery, Chemical Burn Hazard
- This product contains a coin / button cell battery. If the coin / button cell battery is swallowed,
- it can cause severe internal burns in just 2 hours and can lead to death
- Keep new and used batteries away from children
- If the battery compartment does not close securely, stop using the product and keep it away from children.
- If you think batteries might have been swallowed or placed inside any part of the body, seek
- immediate medical attention

BLE Smart Keypad

CAUTION

Risk of explosion if the battery is replaced by an incorrect type

- replacement of a battery with an incorrect type that can defeat a safeguard (for example, in the case of some lithium battery types);
- disposal of a battery into fire or a hot oven, or mechanically crushing or cutting of a battery, that can result in an explosion;
- leaving a battery in an extremely high temperature surrounding environment that can result in an explosion or the leakage of flammable liquid or gas;
- a battery subjected to extremely low air pressure that may result in an explosion or the leakage of flammable liquid or gas.